

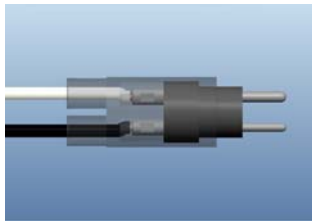


Airport Equipment
Qualified to
FAA Specification
AC 150/5345-26

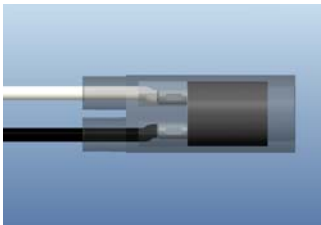
Secondary Connector Kits

USED FOR FIELD ASSEMBLY OF EXTENSION CORDS OR REPAIR OF DAMAGED CONNECTORS.

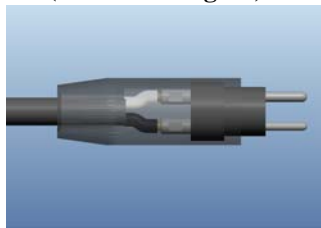
(90 Series Plug kit)



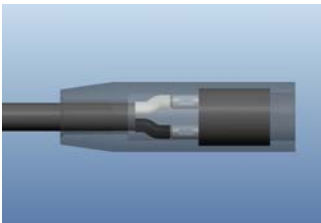
(90 Series Receptacle kit)



(91 Series Plug kit)



(91 Series Receptacle kit)



ORDERING

INSTRUCTIONS

Amerace® connector kit model numbers make it easy to select the right product for your specific application.

Follow the chart to the right.

EXAMPLE

Order catalog number 90P-B6 for a secondary connector kit for a plug (male) termination on 2 single conductors with an outside diameter over insulation between 5 mm² (.195") and 6,6 mm² (.260") and wire size of 4 mm² (10-12 AWG) stranded or 6 mm² (8-10 AWG) solid.

SHIPPING

0,06 kg (.14#) each 6,5 kg (14#)
100/box

SUGGESTED CRIMPING TOOLS

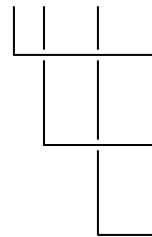
See page 17.

ELECTRICAL

20A
600V between contacts
1500V to earth

CATALOG NUMBER CODE

90 P - B6



Model Number

- 90 for terminating 2 single conductors
- 91 for terminating 2 core cable

Configuration

- P – Plug (male) connector
- R – Receptacle (female) connector

Outside diameter over Insulation (90 Series) or Jacket (91 Series)

Select size code from Table 1.

Wire size

Select size code from Table 2.

Table 1

Insulation or Jacket Diameter				Size Code	Applicable to Kit Models
Metric		Imperial			
Min.	Max	Min.	Max		
3,0	4,0	0.120"	0.160"	S	90P, 90R
3,9	5,5	0.155"	0.205"	A	90P, 90R
5,0	6,6	0.195"	0.260"	B	90P, 90R
6,4	8,4	0.250"	0.330"	C	90P, 90R
8,1	10,9	0.320"	0.430"	D	91P, 91R
10,7	14,9	0.420"	0.585"	E	91P, 91R
14,6	19,9	0.575"	0.785"	F	91P, 91R

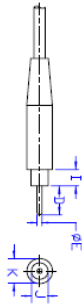
Table 2

Wire Size and Type				
Concentric Stranded		Solid		Size Code
mm ²	AWG	mm ²	AWG	
	14-16		12-14	8
2,5				6
4	10-12	6	8-10	6
6	8	10	6	4

AMERACE Guide to FAA Style Airfield Lighting Connectors

FAA TYPE I PRIMARY

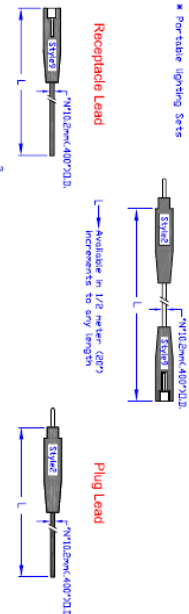
Single Conductor, 25 Amps, 5000 Volts to Earth



* Metal contact shall be recessed not more than 1/8 inch (0.318 cm) below inside face of receptacle and before splitting shall have an ID of 0.1888±0.01 inch (0.4778±0.025cm).

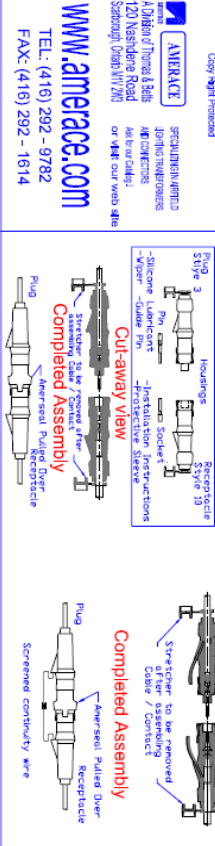
DIMENSION	INCHES	CENTIMETERS
D	1.062 ± 0.015	2.697 ± 0.38
E	0.186 ± 0.001	0.472 ± 0.03
F	1.080 Min	2.743 Min
G	0.593 ± 0.03, -0.00	1.506 ± 0.28, -0.00
H	0.694 ± 0.00, -0.00	1.754 ± 0.23, -0.00
I	0.500 ± 0.00, -0.01	1.270 ± 0.25, -0.13
J	0.573 ± 0.00	1.455 ± 0.25
K	0.508 ± 0.00, -0.015	1.294 ± 0.00, -0.38
L		
M		
N		
O		
P		
Q		
R		
S		
T		
U		
V		
W		
X		
Y		
Z		

Primary Cable Assemblies Series 54M Single Wire Extension



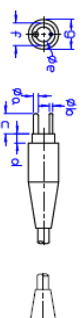
FAA CLASS B Field Applied Connectors

AMERACE
A Division of Thomas & Betts
120 Nashdene Road
Scarborough, Ontario M1V 2W3
or visit our web site
www.amerace.com
TEL: (416) 292-9782
FAX: (416) 292-1514



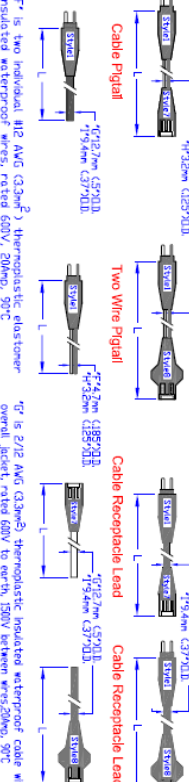
FAA TYPE II SECONDARY

Two Conductor, 20 Amps, 600 Volts Between Conductors, 1500 Volts to Earth



DIMENSION	INCHES	CENTIMETERS
A	0.532 ± 0.01	1.354 ± 0.25
B	0.625 ± 0.015, -0.00	1.587 ± 0.38, -0.00
C	0.425 ± 0.00, -0.00	1.080 ± 0.00, -0.00
D	0.700 ± 0.00, -0.00	1.778 ± 0.00, -0.00
E	0.700 ± 0.00, -0.00	1.778 ± 0.00, -0.00
F	0.700 ± 0.00, -0.00	1.778 ± 0.00, -0.00
G	0.700 ± 0.00, -0.00	1.778 ± 0.00, -0.00
H	0.641 Min	1.628 Min
I	0.328 ± 0.00, -0.015	0.838 ± 0.00, -0.38
J	0.524 ± 0.00	1.330 ± 0.00
K	0.524 ± 0.00	1.330 ± 0.00
L	1.500 ± 0.01	3.810 ± 0.25
M	1.500 ± 0.01	3.810 ± 0.25
N	1.500 ± 0.01	3.810 ± 0.25
O	1.500 ± 0.01	3.810 ± 0.25
P	1.500 ± 0.01	3.810 ± 0.25
Q	1.500 ± 0.01	3.810 ± 0.25
R	1.500 ± 0.01	3.810 ± 0.25
S	1.500 ± 0.01	3.810 ± 0.25
T	1.500 ± 0.01	3.810 ± 0.25
U	1.500 ± 0.01	3.810 ± 0.25
V	1.500 ± 0.01	3.810 ± 0.25
W	1.500 ± 0.01	3.810 ± 0.25
X	1.500 ± 0.01	3.810 ± 0.25
Y	1.500 ± 0.01	3.810 ± 0.25
Z	1.500 ± 0.01	3.810 ± 0.25

Secondary Cable Assemblies Series 95M Two Wire Extensions Cable Extensions



FAA CLASS B Secondary Connector Kits

AMERACE
A Division of Thomas & Betts
120 Nashdene Road
Scarborough, Ontario M1V 2W3
or visit our web site
www.amerace.com
TEL: (416) 292-9782
FAX: (416) 292-1514

